

Annual Board Meeting

January 22, 2013



Interfaith Food Ministry

Feeding Families, Fueling Hope

Agenda

- Welcome, Prayer, Introductions, Confirm Quorum, Approve November Minutes
- 2012 Report (Overview, Financials, Fact Sheet, Food, Fundraising)
- Hunger in Nevada County – Guest Speaker, Jeffrey Brown, Dir. Health and Human Svc
- 2013 Looking Forward (ED & Board Pres, Real Estate, Fundraising, Strategies)
- Old Business (Souper Bowl Sunday – Feb 1)
- New Business (Election IFM Officers, Remarks to Board)

Administrative Items

- Food Needed: Peanut butter, canned meat, cereal, pancake batter, maple syrup, chili
- Volunteers Needed: Tuesday packers, drivers, maintenance director, front office coord.
- 2013 Calendar

Mission & Vision

Mission

Interfaith Food Ministry feeds the hungry in Nevada County, helping to sustain health, human dignity, and the opportunity for individuals to realize their full potential.

Vision

A community where no one should feel the hurt of hunger.

2012 Annual Report



2012 Overview

- Serving More Than We Thought
 - Approx. 13,000 Food Insecure In W. Nevada County
 - Almost 2500 Registered Families And Over 6000 People Being Served By IFM
 - “Operation Turkey” Served Over 1700 Families, Roughly The Same As Last Year
 - Demand Appears To Be Fairly Stable
- Mitigated Facility & Neighborhood Issues By Intentionally Reducing Distribution
 - 60,000 Served, Down Over 30% From Last Year
 - 75,000 Grocery Bags Distributed, Down Almost 18% From Last Year
 - But Giving More Food (Bag/Client Is Up 20%)
 - Need That New Facility To Support Our Mission
- Cash Donations For Operations Down Slightly, Approx. 7.5%, to \$282,000
 - “New Economic Survey Shows Two-Thirds of Charitable Nonprofits Experienced Decreasing or Stagnant Contributions in 2012” – Guidestar USA, Nov 2012
 - Opportunities To Increase Donations From Churches, Businesses, & Individuals

2012 Overview

- Total Expenses Down Almost 12% To \$285,000
 - Primarily Due To Reduction In Food Distribution, Though Actual Cost Of Food Increased
 - Food Program Cost Was \$272,000 or 95% Of Our Total Expense
 - “Food prices are forecast to move even higher, making it harder for people with limited means to stretch their money.” Reuters – Nov 21. 2012
- Partnering Against Hunger Campaign Fund Growing But More Slowly Than We’d Like
 - Total Fund Now At \$133,000 Or 36% Increase From Last Year
 - Paulette’s Fundraisers Great Success – Plan To Do More
 - Still Need That Big Fundraiser Or More Smaller One’s
 - Need Volunteers & Advocates With Right Skills To Help Drive!

Fact Sheet 2012

Clients Served:	2011	2012	% Change
	(Year-end)	(Year-end)	
Total Clients Served	87,922	60,053	-31.7%
Total Registered Families	na	2,492	na
Total Families Served	34,472	23,947	-30.5%
Average Family Size	2.6	2.5	-1.7%
Adults	70%	62%	na
Seniors	na	8%	na
Children	30%	30%	na
Homeless	na	3%	na

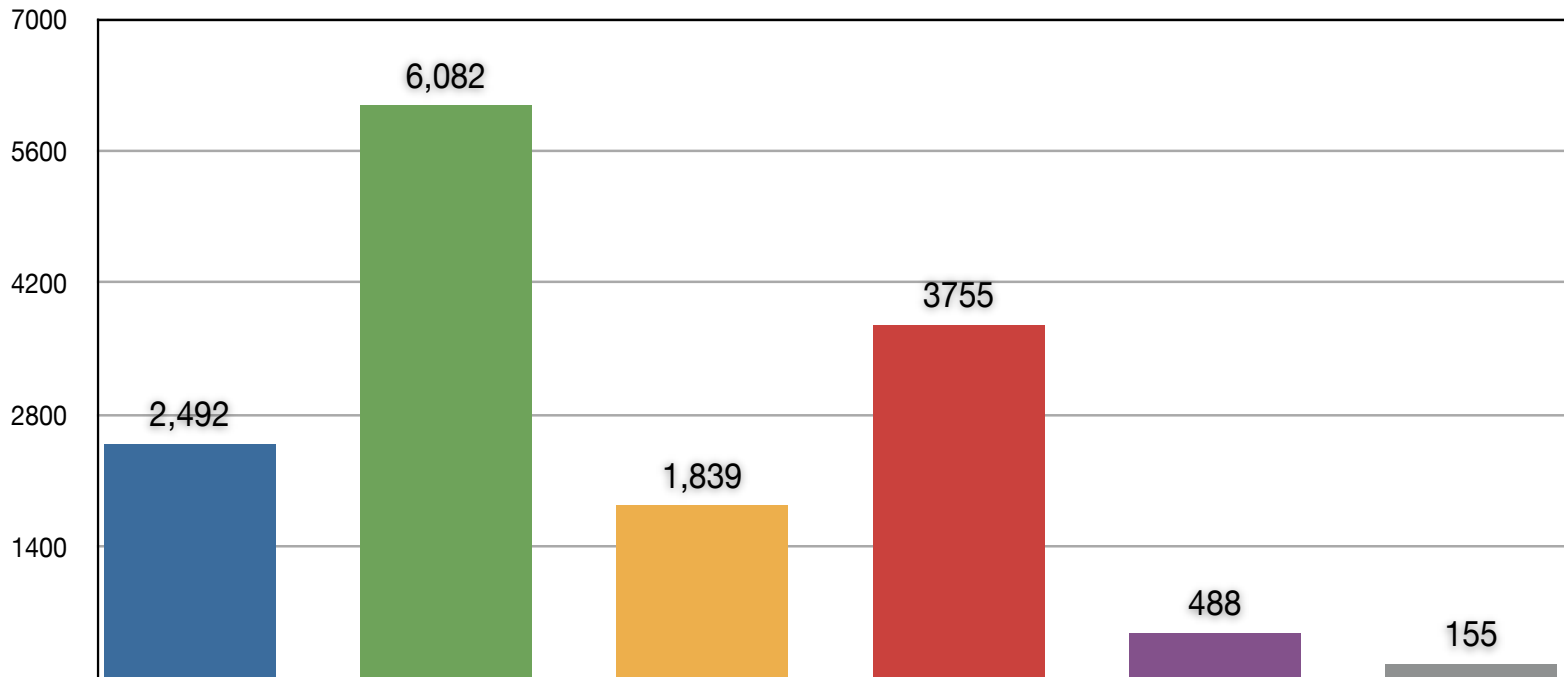
Bags Distributed:	2011	2012	% Change
	(Year-end)	(Year-end)	
Total	91,445	75,083	-17.9%

	2011	2012	% Change
	(Year-end)	(Year-end)	
Receipts	\$304,715	\$282,059	-7.4%
Disbursements	\$322,966	\$285,158	-11.7%
Food Costs:	\$278,548	\$240,542	-13.6%
Other Food Program Costs	\$34,922	\$31,305	
Total Food Program Costs	\$313,470	\$271,847	
Food vs Total	97.1%	95.3%	-1.8%
Facilities Fund	\$95,892	\$133,320	39.0%

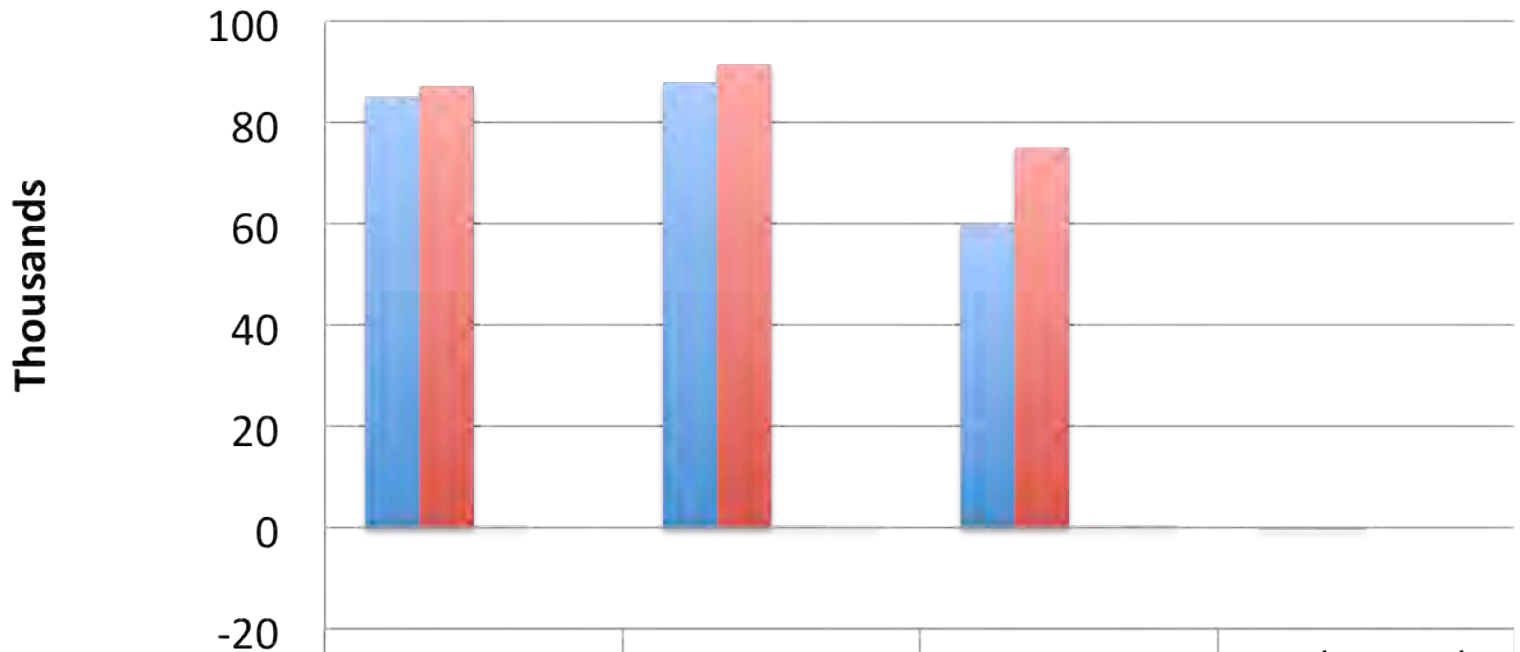
Client Profile

	Registered Families	Household Total	Age 0 to 18	Age 19 to 64	Age 65+	# Homeless
# Of Clients	2492	6082	1839	3755	488	155
% of			30.24%	61.74%	8.02%	2.55%
Avg Family		2.44				

2012 Unique Clients Served



Hungry Served

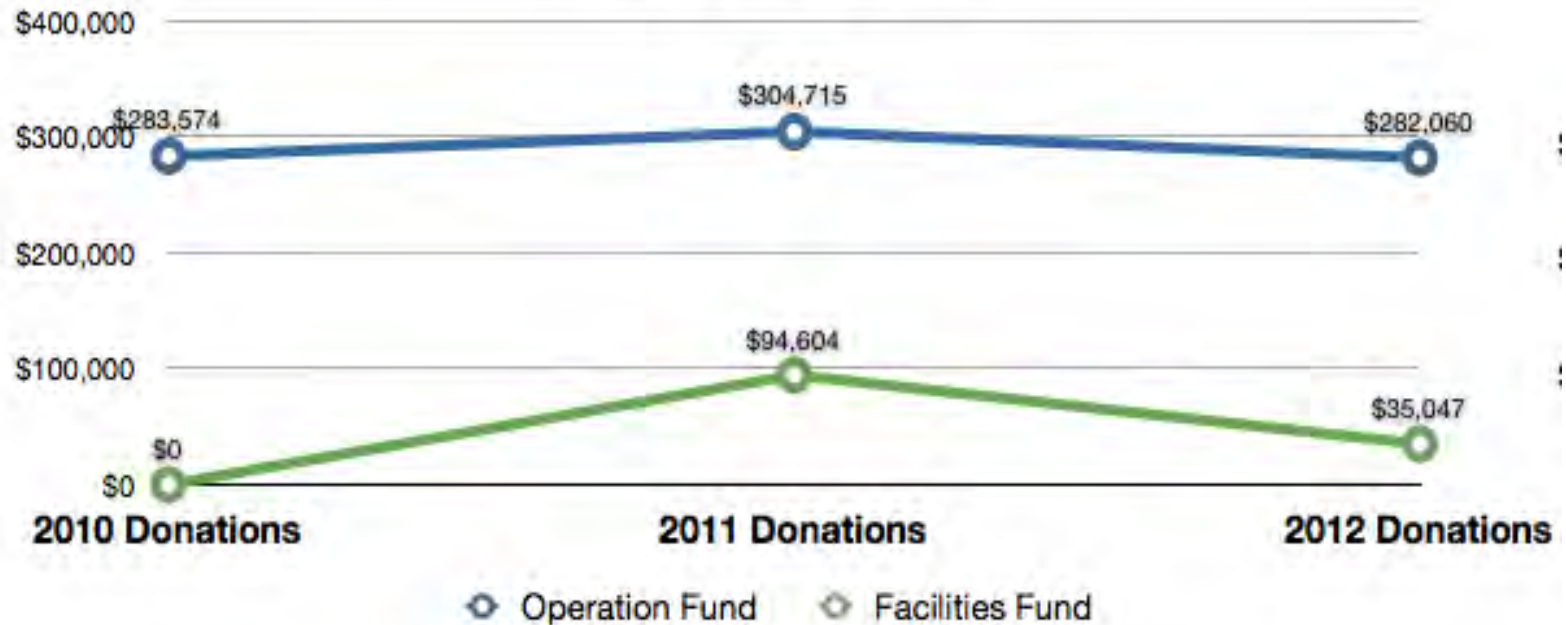


	2010	2011	2012	Yr/YR Inc/Dec
# Of Hungry Served	85085	87922	60044	-32%
# Of Grocery Bags Provided	87182	91445	75083	-18%
Bags/Client	1.02	1.04	1.25	
Bag/Client % Inc/Dec		2%	20%	

Donations

	2010 Donations	2011 Donations	2012 Donations	Year Inc/Dec
Operation Fund	\$283,574	\$304,715	\$282,060	-7.43%
Facilities Fund	\$0	\$94,604	\$35,047	-62.95%
TOTAL	\$283,574	\$399,319	\$317,107	-20.59%

Receipts/Donations



Expenses

	2010 Expenses	2011 Expenses	2012 Expenses	Year Inc/Dec
Food	\$236,044	\$278,548	\$240,542	-13.64%
Program & Support	\$42,748	\$44,418	\$44,616	0.45%
TOTAL	\$278,792	\$322,966	\$285,158	-11.71%



2012 Overview

- Technology and IFM...Like Chocolate And Peanut Butter ☺
 - Deployed SoxBox Client Management Tool Which Provides On-line Computerized Check-in And Management Of Both Client and Volunteer Information
 - Deployed Donor Tools Software Enabling On-line Donor Management and Donations Including Self-Service Capability
 - Completely Revamped IFM Website...Seeing Increased Traffic Incl On-line Donations
- Developed And Approved Amended Bylaws To Meet Legal Requirements, Clarify Language And Meet Current Needs
- Approved Creation Of Two New Positions, Executive Director and Board President, To Replace Current Single Position.
 - ED Will Be Paid Part-time
 - Board President Will Be Volunteer
- Real Estate
 - Board Approved \$500,000 Offer For CORR Building And Agreed To Seek Loan With Assumption Of Quick Payoff (5 Years)
 - Offer Refused But Pending Further Board Feedback

Welcome Jeffrey Brown



Director of HHSA

Hours: 8am-5pm M-F

Phone: 530.265.1627

Fax: 530.265.2295

hhsa@co.nevada.ca.us

Nevada County's Health and Human Services Agency (HHSA) is one of the larger agencies within the county with a budget of over \$62.5 million and 206 employees. Its mission is to improve, promote and protect the health of residents and support and encourage their self-sufficiency in partnership with community members, nonprofit agencies, businesses and other institutions, including other branches of government.

2013 Looking Forward



2013 – Looking Forward

- 2013 Budget & Key Assumptions – Dick Singleton
 - Assume 0% Increase In Contributions
 - Assume 2% Increase In Expenses, Except
 - 3% Increase In Food Expenses
 - Payroll Cost Add Approx. \$25,000
 - **VOTE** To Approve 2013 Budget
- Fundraising & Donations – Sue Vanson
 - Current Facilities Fund: \$133,156
 - What Can We Expect?

2013 – Looking Forward

- Real Estate – Bob Thurman
 - Some Interest In the CORR Building But Nothing Serious Yet
 - Pre-application With USDA Submitted – Awaiting Next Steps. Note: Terms Could Change As Time Marches On
 - Current Offer Of \$xxx Not Accepted, Recommend Board Approve Revised Offer of \$ **VOTE**
 - And Establish A Not To Exceed Maximum Offer Of \$xxx **VOTE**
 - **NOTE:** \$ amount removed but record copy is available by request.

2013 – Looking Forward

- New Executive Director & Board President
 - Posting For ED Position Placed In The Union, CNL, & Briarpatch
 - Total Applicants Received 27
 - 19 Considered Not Qualified
 - 8 Phone Screened
 - Board Appointed Interview Team Met To Review
 - 3 Determined For In-Person Interviews By Team
 - Expect Recommendation By Next Board Mtg
 - Would Board Like To Meet Or Interview Final Candidate?
 - Payroll (Workers Comp Challenge)
 - Transition And Development of Success Criteria

2013 – Old & New Business

- Old Business
 - Souper Bowl Sunday – Feb 1
- New Business
 - Nomination And **VOTE** For IFM Officers and Management
 - Board President – Bob Thurman Nominated
 - Board VP – Nominations Requested
 - Treasurer – Re-nominate Dick Singleton
 - Asst Treasurer – Re-nominate Bernie Delgado
 - Secretary – Re-nominate Connie Wright
 - VP Operations – Nominations Requested
- Final Remarks

2013 – Looking Forward

- IFM Long-term Direction
 - Board Driven Conversation About IFM Direction
 - Topics For Consideration May Include
 - Greater Focus On Nutrition
 - USDA The Emergency Food Assistance Program (TEFAP)
 - Increased Focus On Providing “Handup”
 - Ways To Recruit Needed Skills?
 - What’s The Best Direction For IFM?
 - Your Ideas?
 - Thoughts Regarding Annual Report Format
 - Next Meeting: February 26, 2013, 9:30am at IFM

Whew What A Year - Thank You!

Thank You To Our 450+ Volunteers, Partners, Churches, Individuals And Businesses.
Our Everlasting Gratitude To God, Whose Guidance Inspires And Leads Each Of Us
Everyday To Help Feed Those Who "Hurt From Hunger".

